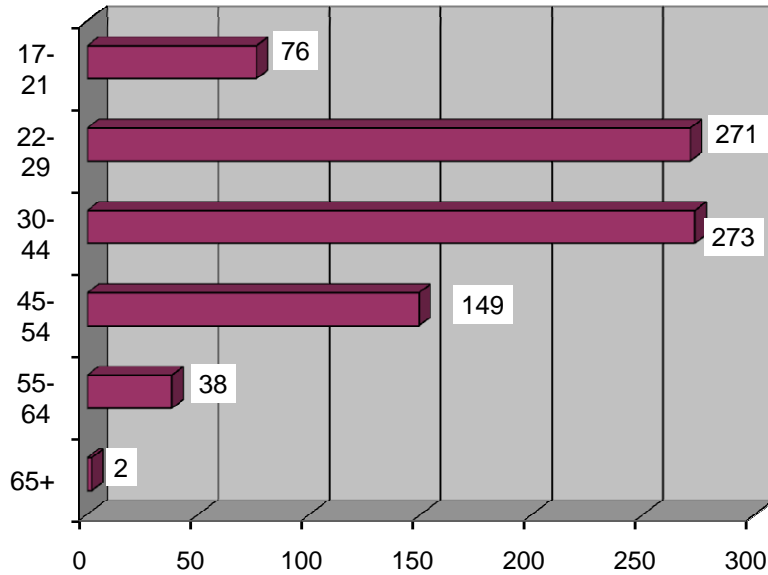
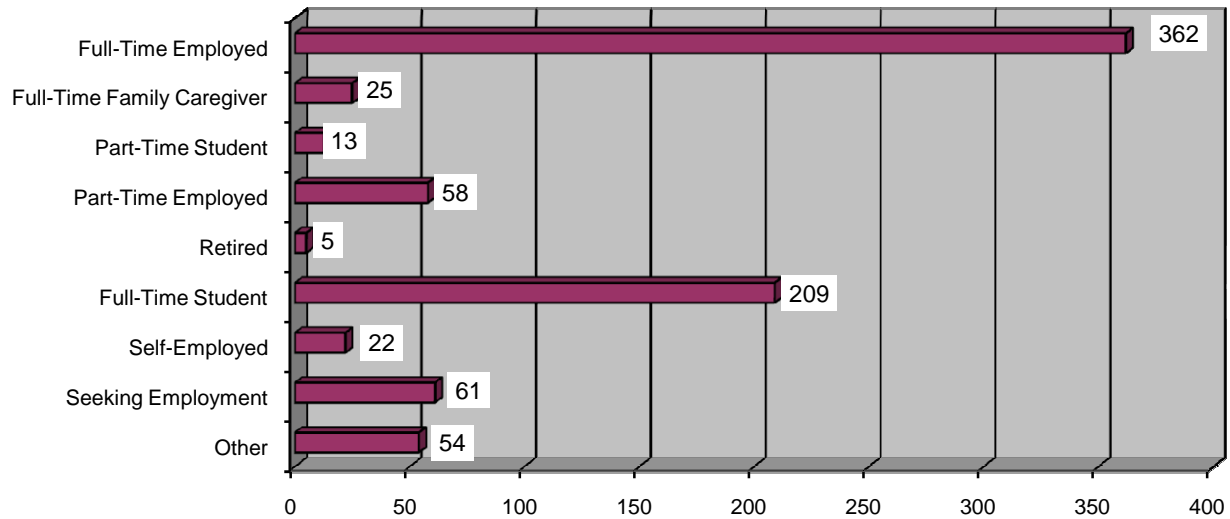


# 2009 Alumni Association Survey Results

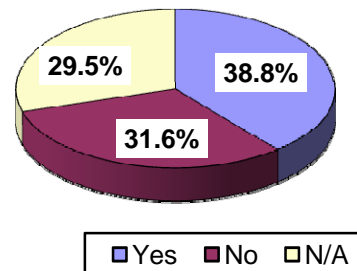
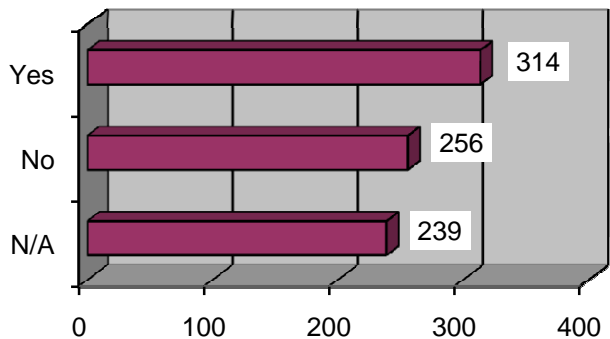
## 1. What is your age group?



## 2. What is your current professional status?

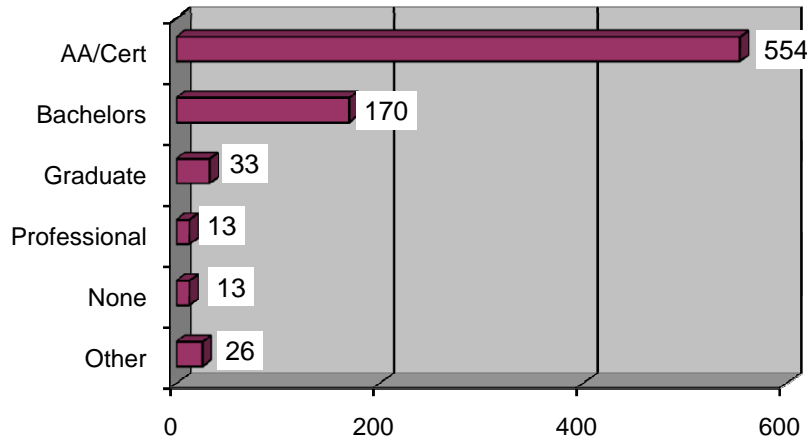


## 3. Do you work in the discipline in which you received your degree from Community Colleges of Spokane?

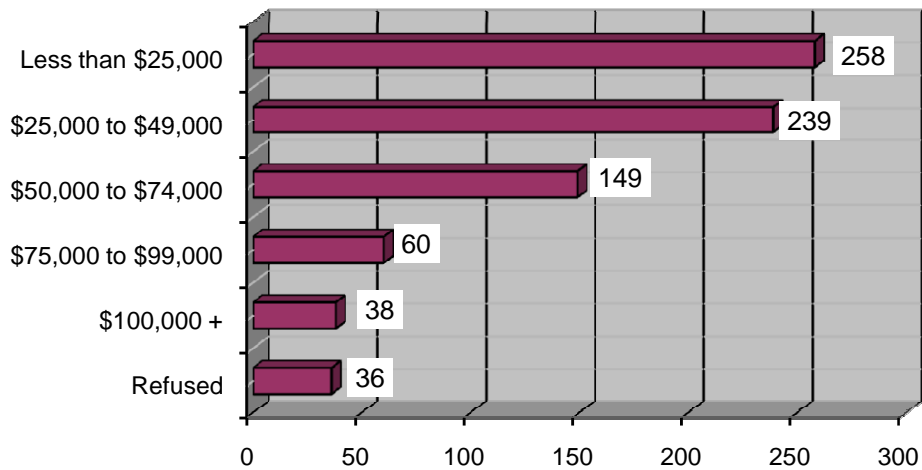


# 2009 Alumni Association Survey Results

## 4. What is the highest degree you've obtained in higher education?



## 5. Which of the following best describes your annual household income?



## 6. Please describe your level of satisfaction with each area of your Community Colleges of Spokane student experience.

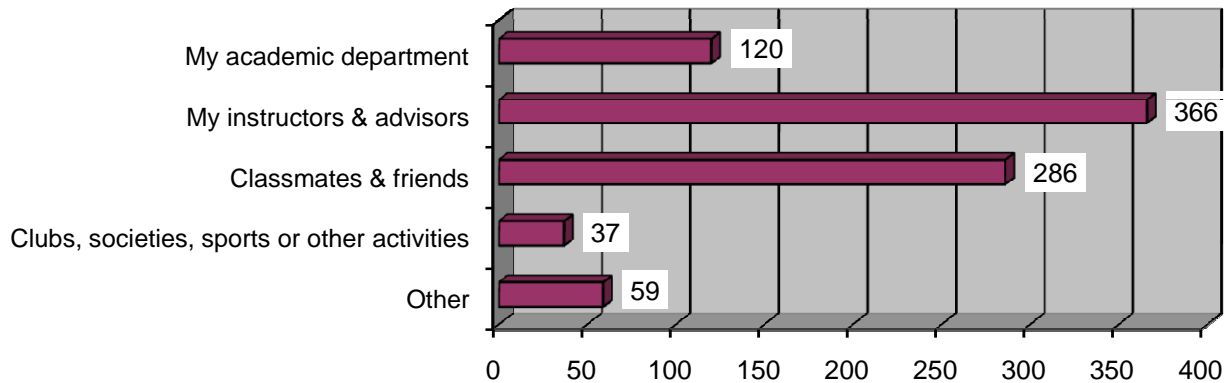
	Very Satisfied	Satisfied	Somewhat Satisfied	Somewhat Unsatisfied	Not Satisfied	Response Total
Overall student experience at CCS	357	342	55	17	10	781
Classroom experience (instructors, courses or curricula)	313	354	91	16	7	781
Experience outside the classroom (Activities I participated in or attended)	202	345	162	46	26	781
Sense of community and formation of long lasting friendships	173	269	216	72	51	781

# 2009 Alumni Association Survey Results

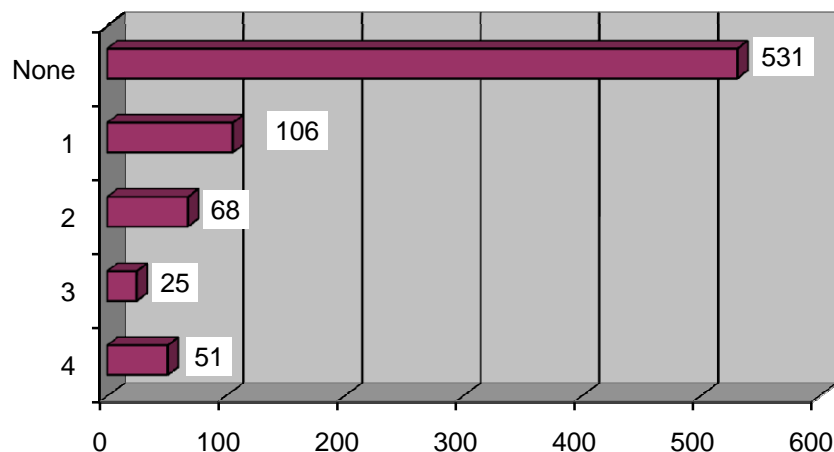
## 7. If you could start college over again, would you choose to attend Community Colleges of Spokane?

Definitely Yes	51.6%	403
Probably Yes	32.9%	257
Uncertain	9.3%	73
Probably Not	4.7%	37
Definitely Not	1.4%	11
Total Responses		781

## 8. Regarding your relationship with Community Colleges of Spokane, where do you have the strongest connection?



## 9. How many CCS activities have you attended in the last 12 months?



# 2009 Alumni Association Survey Results

## 10. How likely would you be to attend the following events or activities on campus?

	Very Likely	Likely	Somewhat Likely	Somewhat Unlikely	Not Likely	Response Total
Bigfoot athletic events	40	45	104	108	484	781
Workshop or class relating to my job or career	154	196	181	63	187	781
Community open house or tour	26	60	134	153	408	781
Theater, musical or art opening	91	144	204	99	243	781
Reunion of faculty, staff & students in your department	98	133	180	117	253	781
Lunch/dinner in the student run restaurant Orlandos or banquet dinner prepared by culinary students	101	139	181	111	249	781
Alumni Association special event/reunion	86	138	187	133	237	781

## 11. Please rate the following benefits on their value to you from the CCS Alumni Association.

	Most Valuable	Valuable	Somewhat Valuable	Somewhat Unvaluable	Not Valuable	Response Total
AAA	110	219	164	25	209	727
Aspire Electrolysis & Skin Care Clinic	18	84	159	120	346	727
Back to Earth Essentials	23	81	196	102	325	727
Dagny's Coffee Company	37	99	173	98	320	727
Davenport Hotel	103	168	191	51	214	727
Discount AMC and Regal Cinema movie tickets	202	219	157	19	130	727
Hi-Tek Nails	25	80	129	118	375	727
Hotel Lusso	72	117	174	94	270	727
Kentech Auto Repair	37	108	186	94	302	727
Leopard Lattes	29	79	174	101	344	727
Liberty Mutual Insurance	26	77	172	110	342	727
Lube Tube	35	108	203	80	301	727
Luigi's Italian Restaurant	87	182	190	58	210	727
Montvale Hotel	52	121	178	97	279	727
Spokane Teachers Credit Union	118	137	150	71	251	727
Valley Youth Soccer League	24	57	142	115	389	727

## 2009 Alumni Association Survey Results

Whites Outdoor	41	119	191	102	274	727
Access to our colleges' libraries, career planning and placement services	237	162	125	46	157	727
Alumni athletic membership discount	121	114	167	71	254	727
Bookstore discount	185	167	153	44	178	727
½ Admission to all Bigfoot Athletic Events	79	118	158	90	282	727
Staying in touch with classmates	105	141	188	99	194	727

### 12. Please rate the following POSSIBLE benefits on their value to you from the CCS Alumni Association.

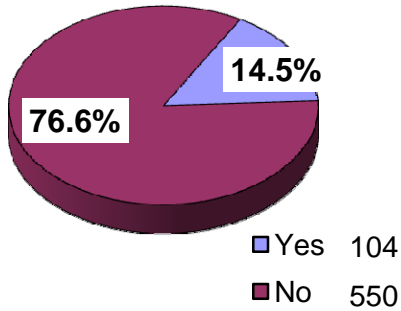
	Most Valuable	Valuable	Somewhat Valuable	Somewhat Unvaluable	Not Valuable	Response Total
Local restaurant discounts	291	223	109	18	86	727
Cell phone service discounts	233	201	133	41	119	727
Invitations to special events & ceremonies	130	168	210	78	141	727
Campus performance discount tickets	138	180	188	63	158	727
Insurance discounts – Auto, Life & Disability	192	179	148	67	141	727

### 13. How important are each of the following when deciding whether or not to join the Community Colleges of Spokane Alumni Association?

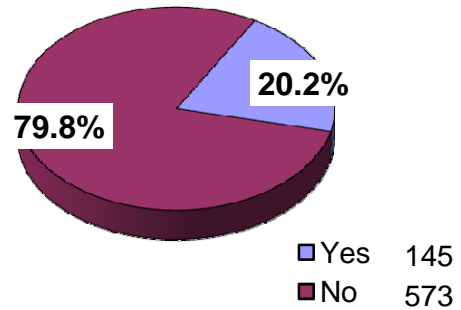
	Very Important	Important	Somewhat Important	Somewhat Unimportant	Not Important	Response Total
The value of a specific membership benefit	168	201	192	38	108	707
Supporting Community Colleges of Spokane	170	248	178	44	70	710
Staying in touch with other Community Colleges of Spokane alumni	74	142	223	104	167	710
Staying current with events at CCS	68	138	241	114	147	708
Cost of membership	274	184	131	49	69	707

# 2009 Alumni Association Survey Results

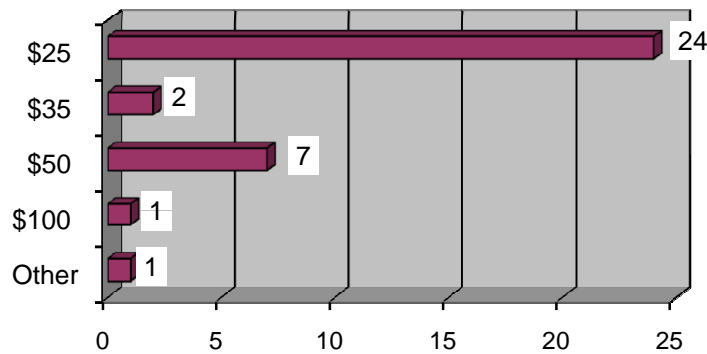
**14. Would you be interested in mentoring a current CCS student?**



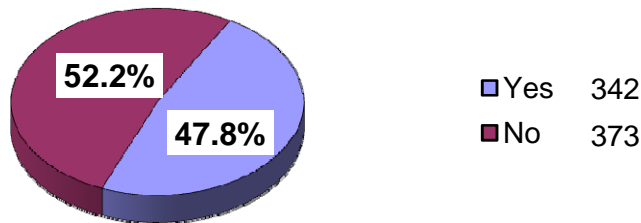
**15. Would you pay an annual membership fee if one was required for alumni?**



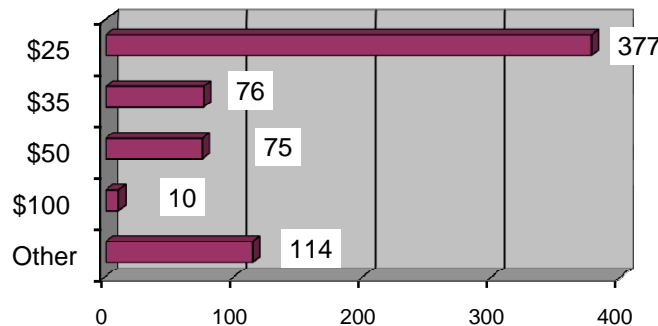
**16. If yes, what would be a reasonable annual membership fee to join the alumni association?**



**17. Would you be willing to pay a membership fee if it went directly to the Alumni Scholarship fund?**

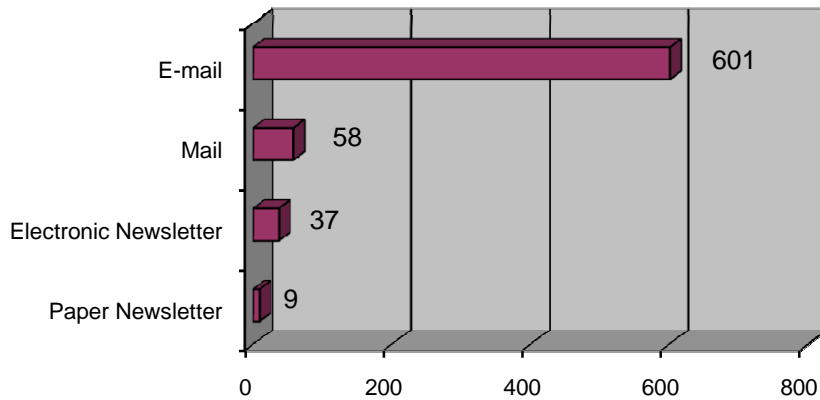


**18. What would be a reasonable one-time membership fee to join the alumni association?**



# 2009 Alumni Association Survey Results

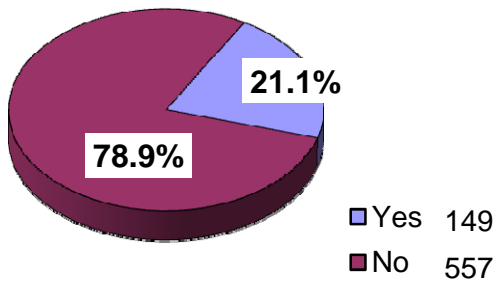
**19. What is the most effective method the alumni association can use to get a hold of you?**



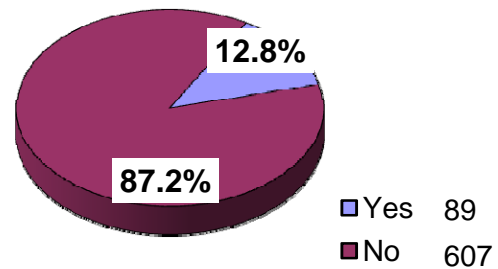
**20. If you had a chance to talk to Presidents Joe Dunlap (SCC) or Mark Palek (SFCC) or Chief Executive Officer Scott Morgan (IEL), what would you tell them about your experience?**

See Appendix A

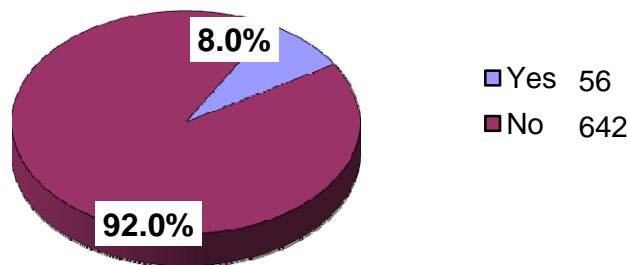
**21. Would you be interested in participating in an Alumni Association focus group?**



**22. Would you be interested in serving as a volunteer for an alumni event/fund raising coordination?**



**23. Would you be interested in donating a service to the CCS Foundation ?(i.e. website development, event planning)**



If yes, what kind of service?

- 1 POTENTIALLY EVENT PLANNING/ASSISTANCE
- 2 community contact, news letter, donations ect
- 3 not yet, but marketing
- 4 types of ways to get the word out... ie. posters, letters, e-mails, etc.
- 5 Web Site Development
- 6 Yes if I could do it from a distance. I do not live in the Spokane area.
- 7 Massage therapy
- 8 event planning

# 2009 Alumni Association Survey Results

- 9 Event planning most likely
- 10 Accounting
- 11 offering prospective students help before they start classes...via the internet...
- 12 Maybe
- 13 Speaker on empowerment
- 14 Again I live too far away, but I work close to the Alumni Department of Northwest University
- 15 Whatever I can do on the computer.
- 16 event planning
- 17 Event planning/marketing
- 18 depends,
- 19 English creative writing critique
- 20 Touring. mentoring, introduction to Spokane.
- 21 Whatever I could do.
- 22 depends on what is needed
- 23 Donating a Christmas Tree from our Farm
- 24 Again, whatever help was needed, in the background!
- 25 Maybe
- 26 maybe something in regards to marketing
- 27 Maybe
- 28 would be based one availability of time and resources. and willingness.
- 29 Website development
- 30 not now, in the future
- 31 maybe
- 32 Website
- 33 secretarial services or writing articles or such
- 34 website development
- 35 event planning
- 36 maybe, website development
- 37 food service
- 38 Printed materials design.
- 39 Maybe - It depends
- 40 maybe
- 41 some type of background work like setting up for events
- 42 not sure yet, would need to discuss
- 43 Perhaps in the future

***150 new members signed up for the Alumni Association as a result of this survey.***